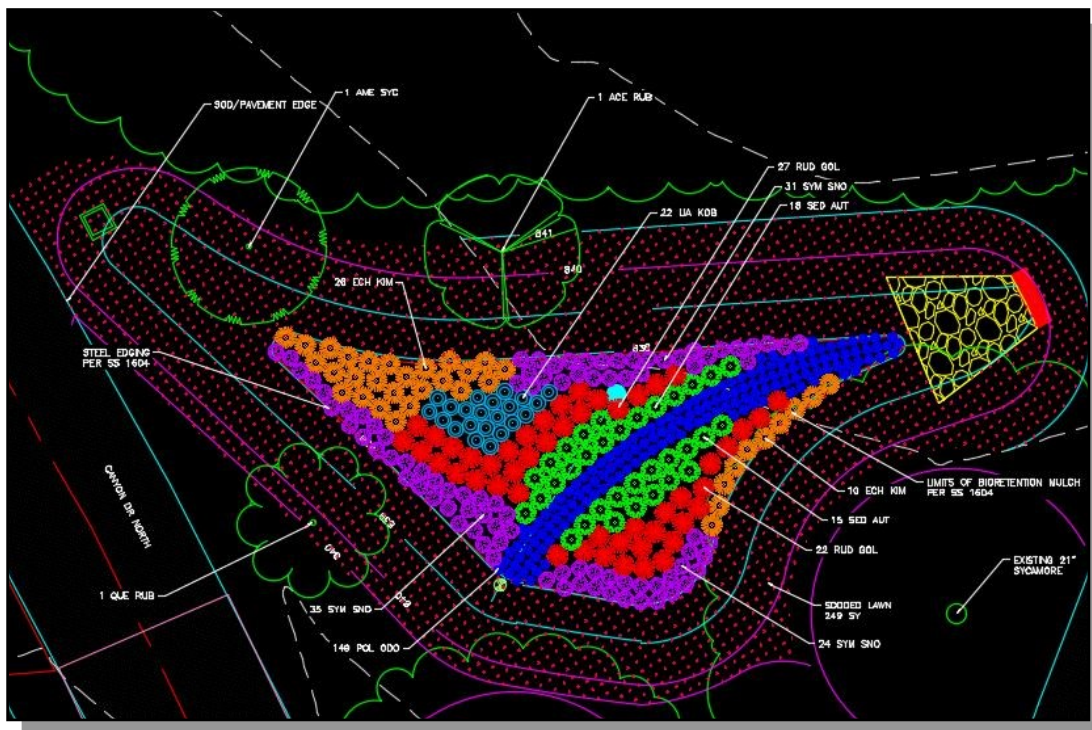


Clintonville - Cooke-Glenmont Area Blueprint Green Infrastructure Pilot Project City of Columbus, Ohio

As a subconsultant to Brown and Caldwell, Coldwater provided planning and design services for this Blueprint Columbus project. The Cooke-Glenmont area was evaluated for the use of green infrastructure to manage stormwater runoff and provide stormwater quality treatment. The overall project goals were based on reducing inflow and infiltration (I&I) into the sanitary sewer system and using green infrastructure to meet stormwater quality / quantity control objectives. The green infrastructure opportunities analysis portion of this project was focused on public right-of-way areas to avoid the need for easement or property acquisitions. The GI alternatives that were evaluated included bioretention systems designed as curb extensions, rain gardens, bioretention basins and tree planters. Other green infrastructure options considered included permeable pavement improvements and underground storage systems. This project also included a public outreach component to inform local residents about the Blueprint program and solicit their input during design.

Coldwater's responsibilities included assisting Brown and Caldwell with field assessments, preparing concept renderings using GIS, writing sections of the preliminary design report (PDR), detailed design, preparing native planting plans, and engineering services during construction. The PDR included an alternatives analysis that identified various suites of green infrastructure and presented the benefits and costs of each. Critical design considerations included construction cost, water quality and quantity goals, avoiding existing trees and root zones, minimizing utility conflicts, maintenance of minimum street widths and turning radii for public safety, incorporation of public amenities and neighborhood beautification. The project design is complete and construction is currently underway. Coldwater continues to be involved during construction to provide oversight of the landscape restoration improvements and other green infrastructure elements.



This detailed planting plan was developed for a regional bioretention basin in the Cooke-Glenmont project area.